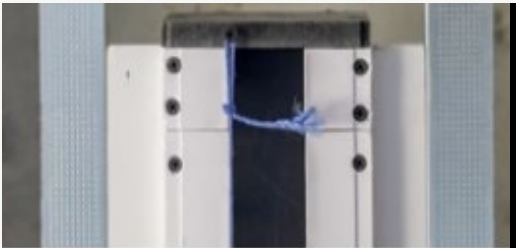


FINISHING PROCESS C2020 - alignment



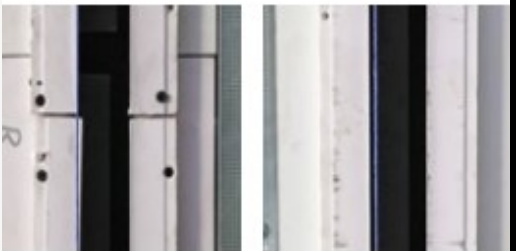
1

The installation take place between the spaces of the metal gypsum board by using threaded rods, according specification.



2

The whole system is aligned with a suture or Laser.





3

Minor corrections at the bottom part of the system for a perfect elegant finishing. At the connection points a slightly sanding it may need by using a sandpaper.

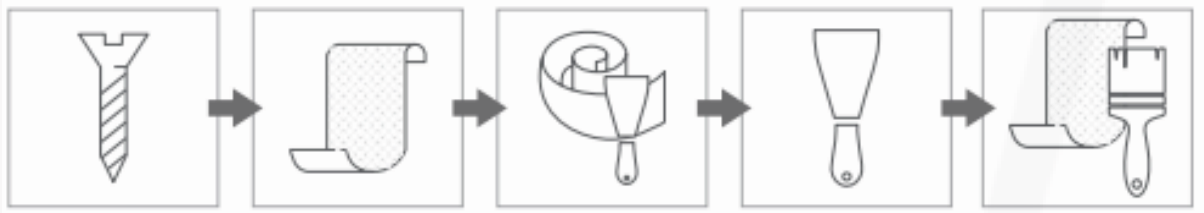


4

The finishing process follows.

PVC TO PLASTERBOARD JOINT PROCEDURE

To prevent cracks and to provide the best finish between PVC foam-board and plasterboard joint, a special procedure described below should be followed.



STEP 1

Use double threaded screws to fasten PVC grille in place and secure a tight fit along with the plasterboard.

STEP 2

Slightly scrub the PVC surface to make it rougher using sandpaper. Fill the small gap between PVC surface and gypsumboard by applying a thin and even layer of the special joint filler compound.

STEP 3

Instantly after step 2 and when compound is still wet, place and stick a special textile fiber glass joint tape on it and let it dry.

STEP 4

Apply a thin and even layer of the special joint filler compound on top of fiber glass joint tape and let it dry.

STEP 5

Using a fine grid sandpaper scrub the surface till it becomes smooth. Then it is ready to be painted.